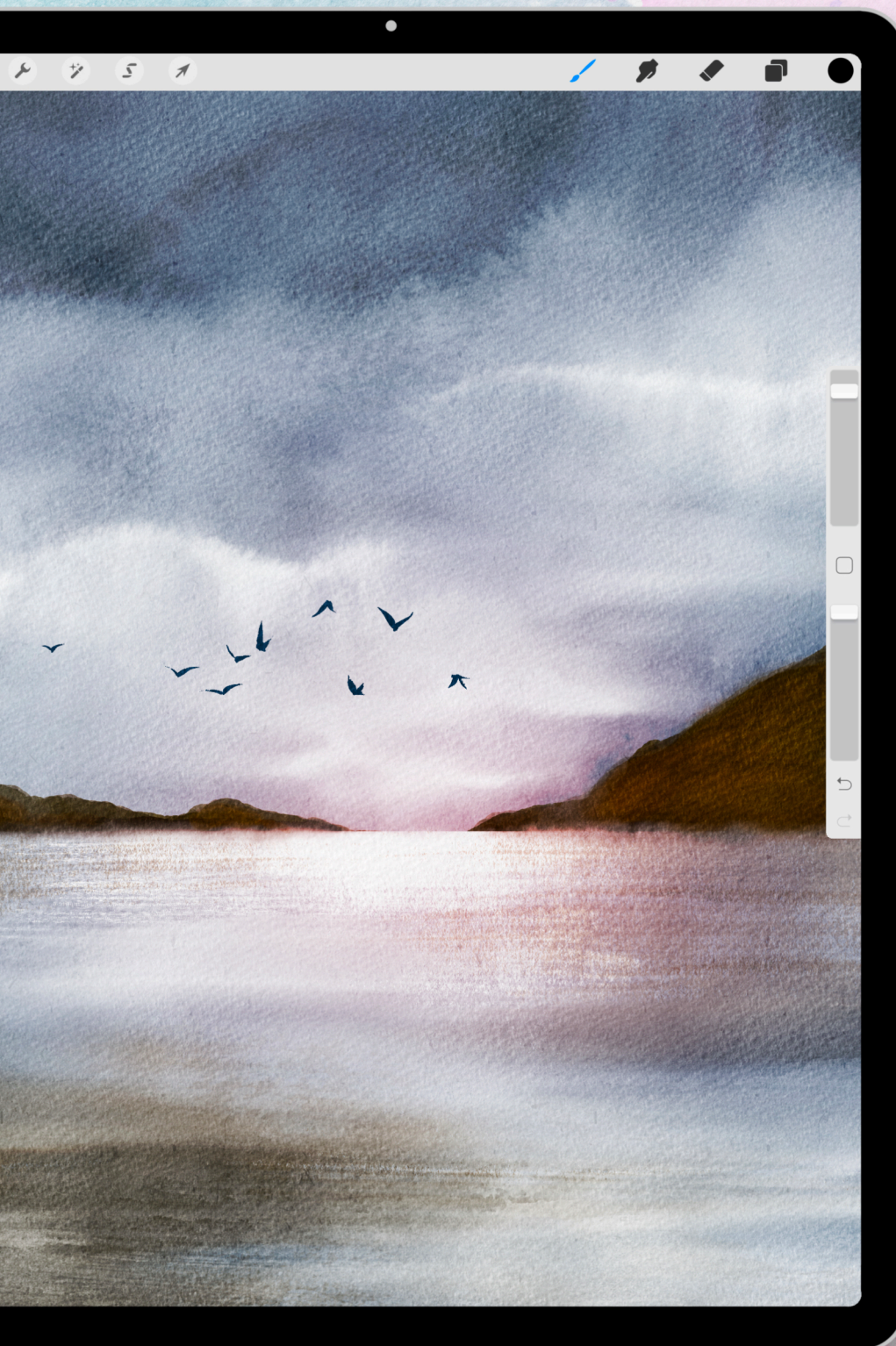


# WATERY LANDSCAPES

\* Tons of inspiring watery landscapes to look at here:

WATERY LANDSCAPES



## THINGS TO REMEMBER:

- \* Take your time, don't rush.
- \* Look at lots of real watercolour landscapes to make your Procreate watercolour look more realistic
- \* Add a "glow" on the horizon.
- \* Include recognisable objects to give your landscape scale.

# BRUSH TIPS:



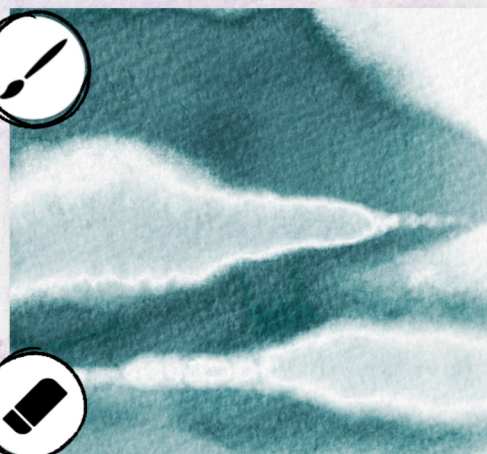
WET ON WET  
brushes for instant  
sky



JAPANESE  
WATERCOLOUR for  
detail, birds, people  
& topography



DRY BRUSH TEXTURE  
for instant sea/land



STAIN JANE  
for instant sky and  
clouds



STUBBY SMUDGER  
very versatile,  
smudging, painting &  
erasing sky, sea &  
clouds



BLOOMING SEEP  
for grasses, and light  
in clouds



BLUNT DRY  
for streaks and  
texture



TREE BRUSHES  
obviously for trees